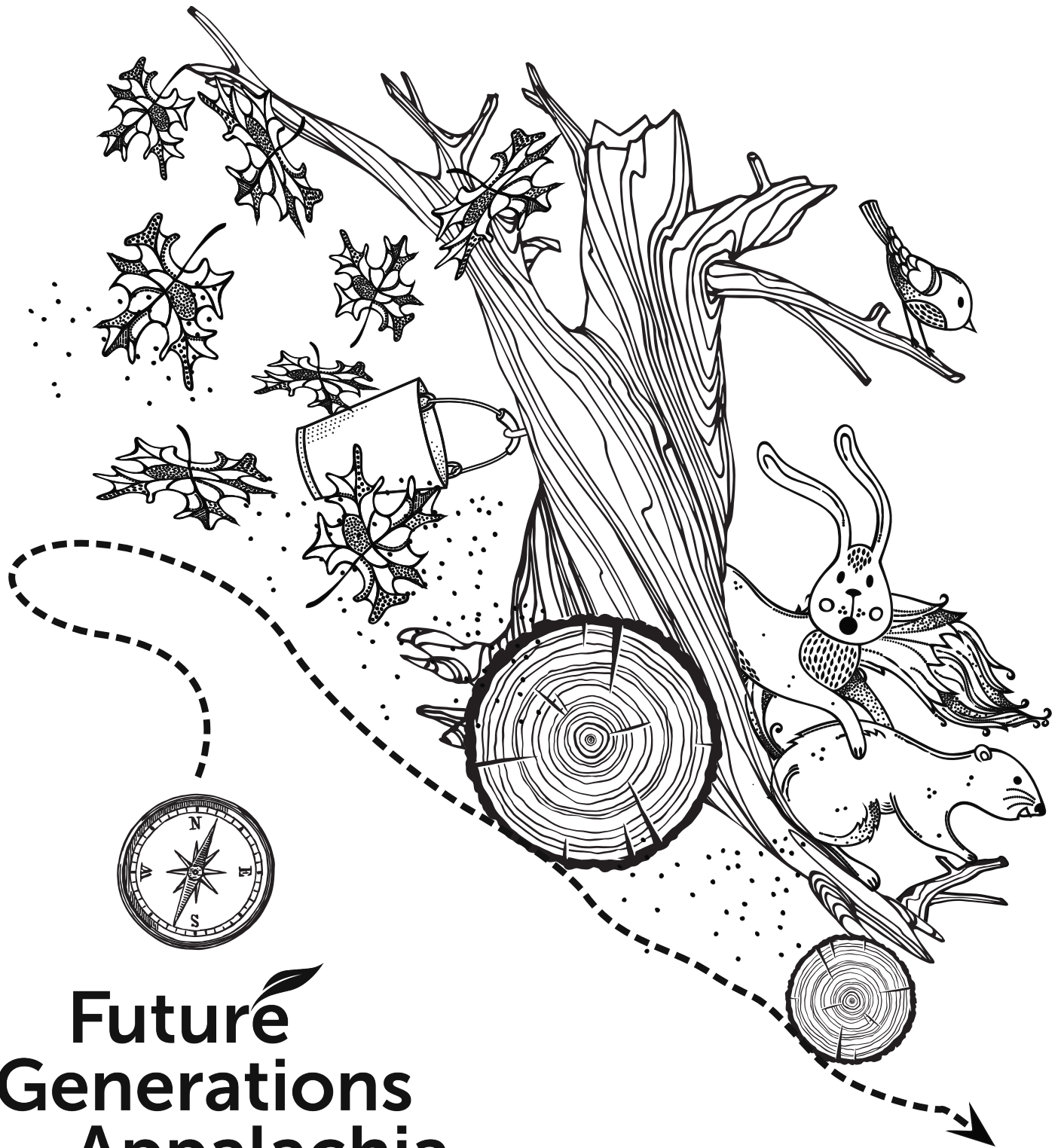


Maple Explorer Guide



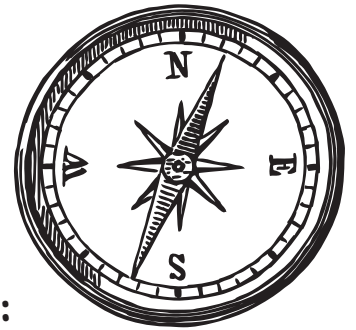
Future
Generations
Appalachia

Maple Syrup Production in Appalachia

Where Can We Find Sugar Maple Trees?

Sugar maple trees grow best in areas with cold temperatures in the winter and lots of rain in the summer. Their native range includes southern Canada and the northeastern United States as well as portions of the midwestern and southeastern United States. On the map below, you can find several of the states where people collect maple sap to make maple syrup, and these states are part of the 13 states that make up the region known as Appalachia!

1. Color the state you live in red
2. Color states you have visited blue
3. Color states you would like to visit green
4. Can you find the Appalachian States on the Map:



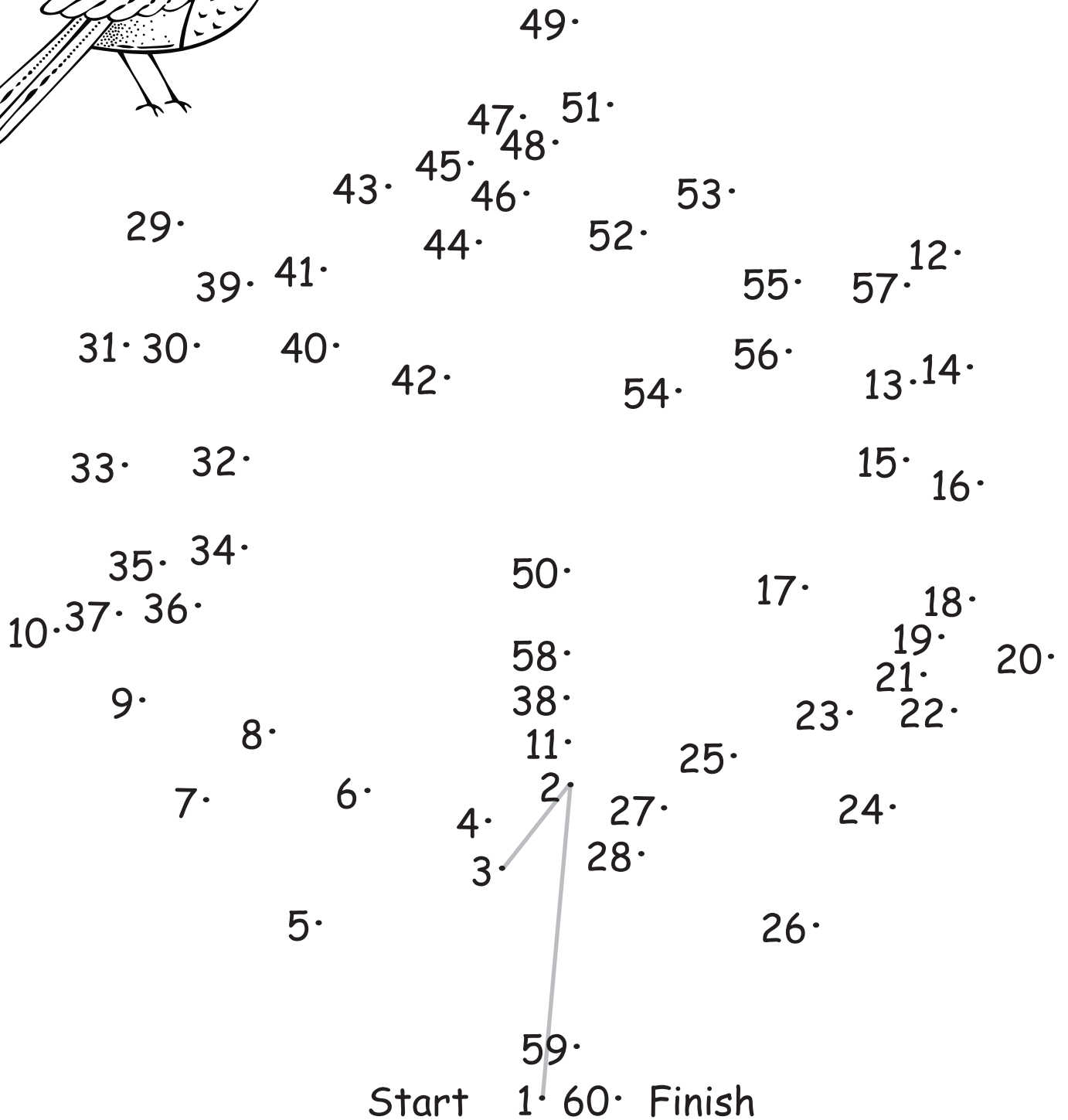
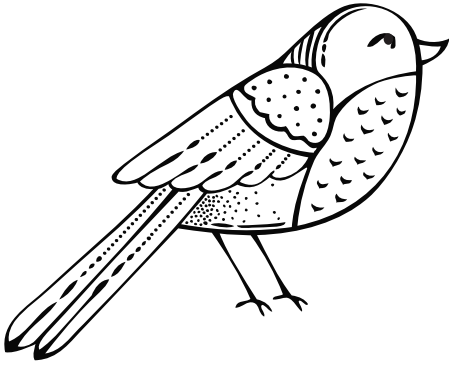
New York
Pennsylvania
Ohio

West Virginia
Maryland
Virginia

Kentucky
Tennessee
North Carolina



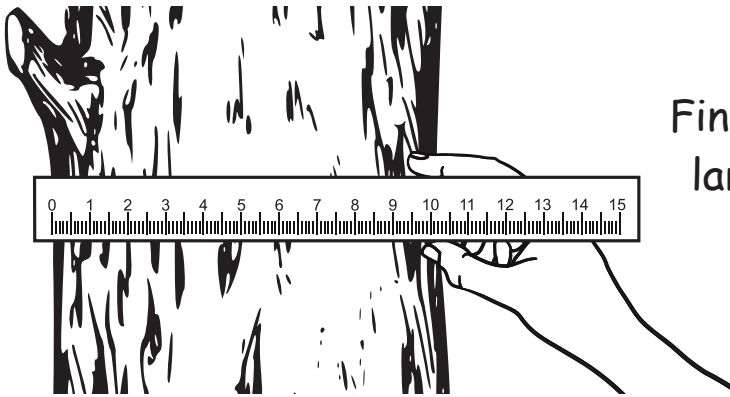
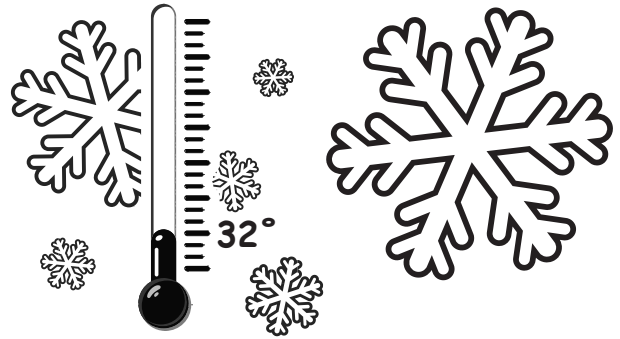
Connect the Dots



How to Make Maple Syrup

Step 1:

Check the temperature - if it is freezing at night and above freezing during the day, this creates sap flow within the tree



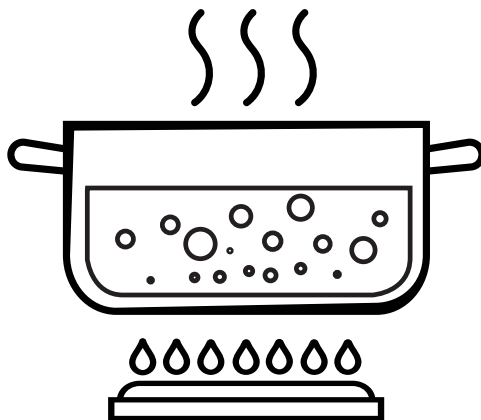
Step 2:

Find maple trees which are large enough- at least 10 inches in diameter



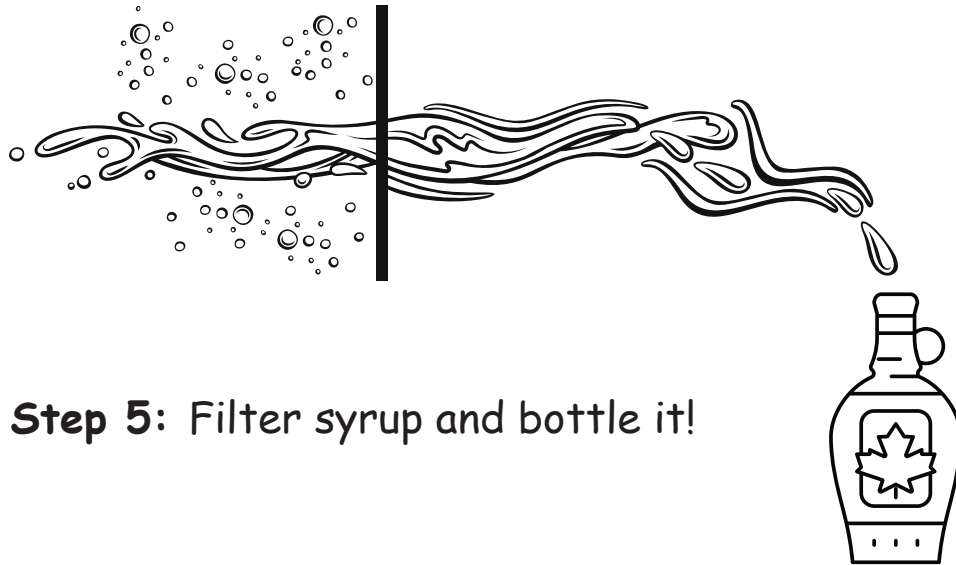
Step 3:

Tap your tree by drilling a hole and placing a tap. Hang a bucket or connect tubing to collect the sap.

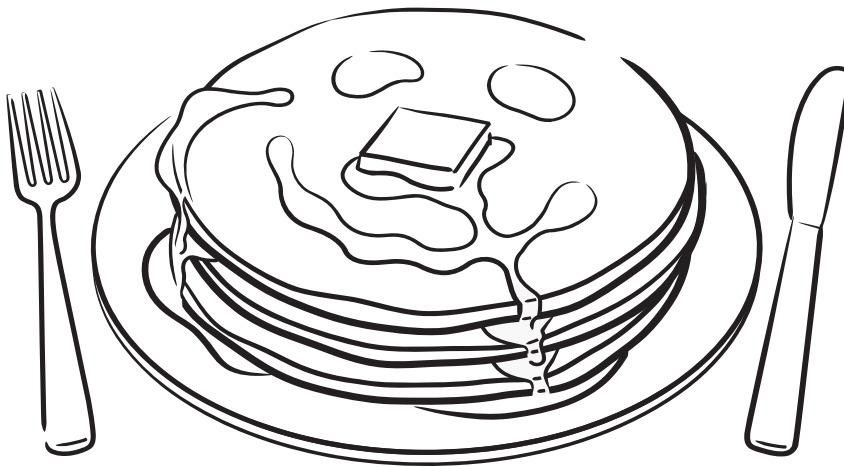


Step 4:

Boil the sap into syrup with an evaporator

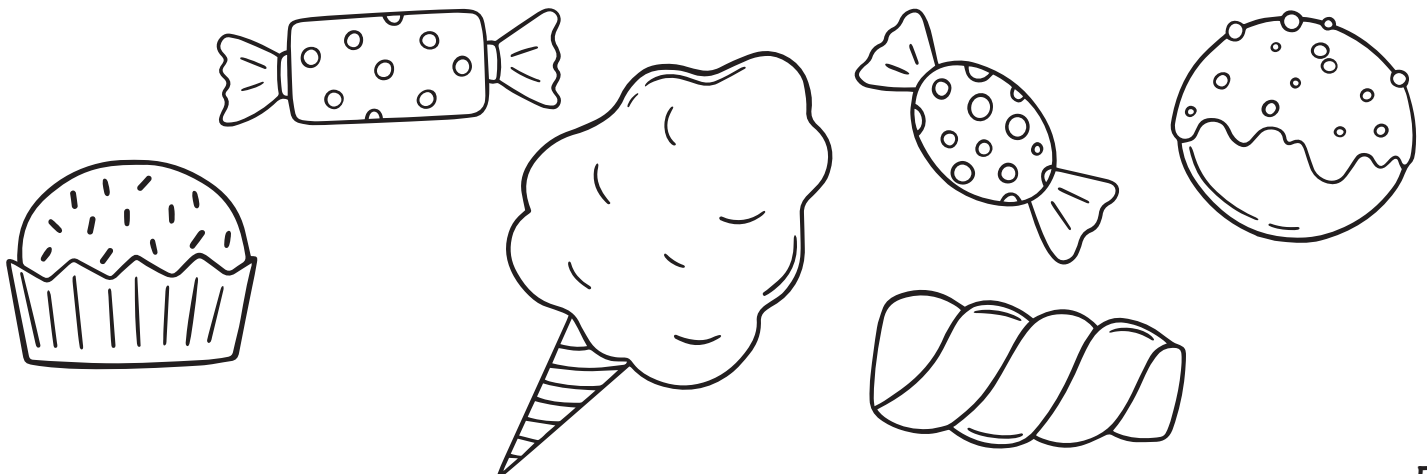


Step 5: Filter syrup and bottle it!



Step 6:
Use syrup on
pancakes or in
recipes

Step 7:
Make value-added products such as cotton candy or maple sugar!



Animals of the Sugarbush

Hidden Pictures

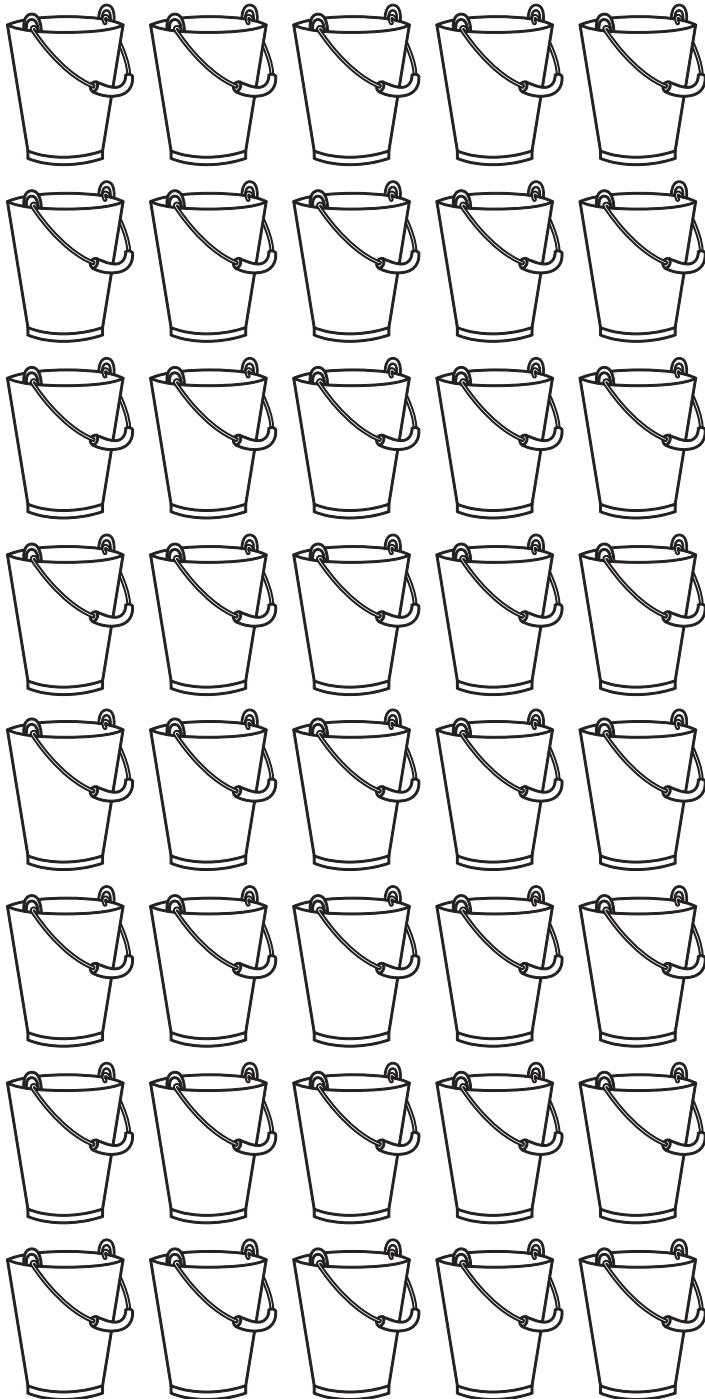
A sugarbush is a woods where a maple producer taps maple trees and collects sap to make maple products. Sugarbushes provide shelter for many animals, what critters can you find?



List of Animals Found in Appalachian Sugarbushes:

Deer, fox, racoon, rabbit, wolf, porcupine, bear, birds, squirrel, insects (such as butterflies and moths), mice, snake, coyote, and frogs.

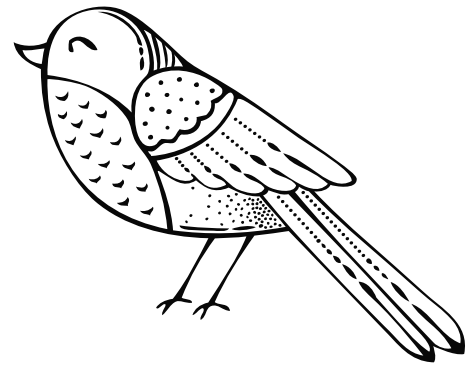
How much sap does it take to make a gallon of maple syrup?



The Rule of 86:

$86 \div (\% \text{ sugar in sap}) =$
of gallons of sap to
make 1 gallon of syrup

(This formula is used
by sugar makers to
figure out how much
syrup they can make!)



About 40
gallons of sap
makes 1 gallon
of syrup!





About Future Generations University Appalachian Program

Future Generations University, based in Franklin, WV, promotes research, learning, and action towards sustainable community change worldwide. The university has an MA program in Applied Community Development as well as several sustainable development learning communities throughout the world, one of which encompasses the Central Appalachian region. The team assigned to the Appalachian program works closely with landowners, farmers, service providers, and educators to move forward the agroforestry economic sector in the region.

About Maple in the Classroom

Maple in the Classroom is an interdisciplinary curriculum incorporating hands-on education to bring forestry in Appalachia into the classroom setting. Across a variety of lessons, PreK-12 students will have the opportunity to participate in activities such as using their five senses to engage with the natural world, watching celery change colors, unraveling the secrets of trees by decoding their rings, sampling maple syrup, and so much more. Throughout this curriculum, the maple tree and maple syrup serve as anchoring threads to help students gain a better understanding of the forest as an important part of their communities.

Please contact syrup@future.edu if you are interested in either the Appalachian program area or Maple in the Classroom.

Future Generations University

www.future.edu

©2024 FUTURE GENERATIONS UNIVERSITY

400 ROAD LESS TRAVELED, FRANKLIN, WEST VIRGINIA 26807